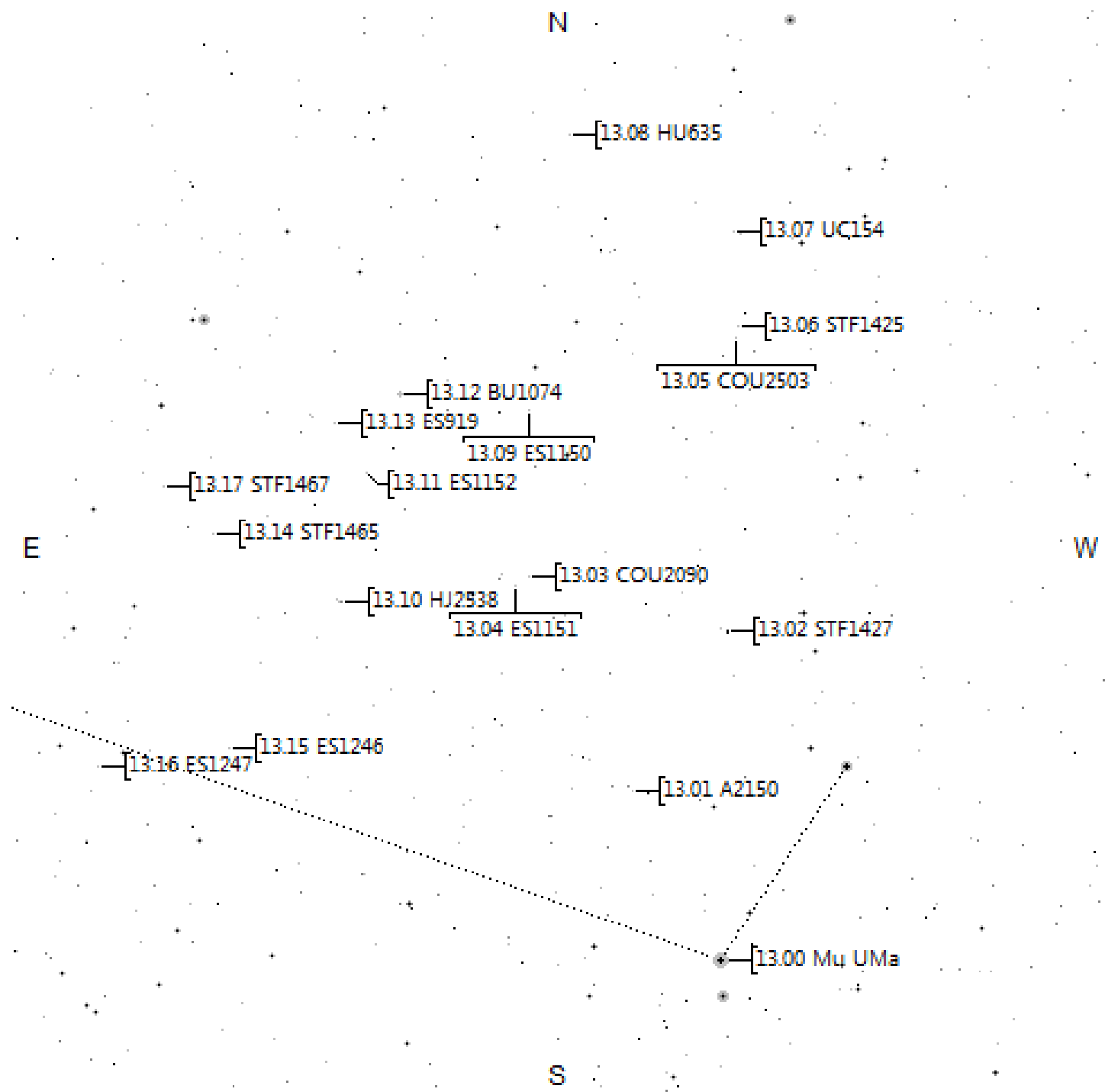
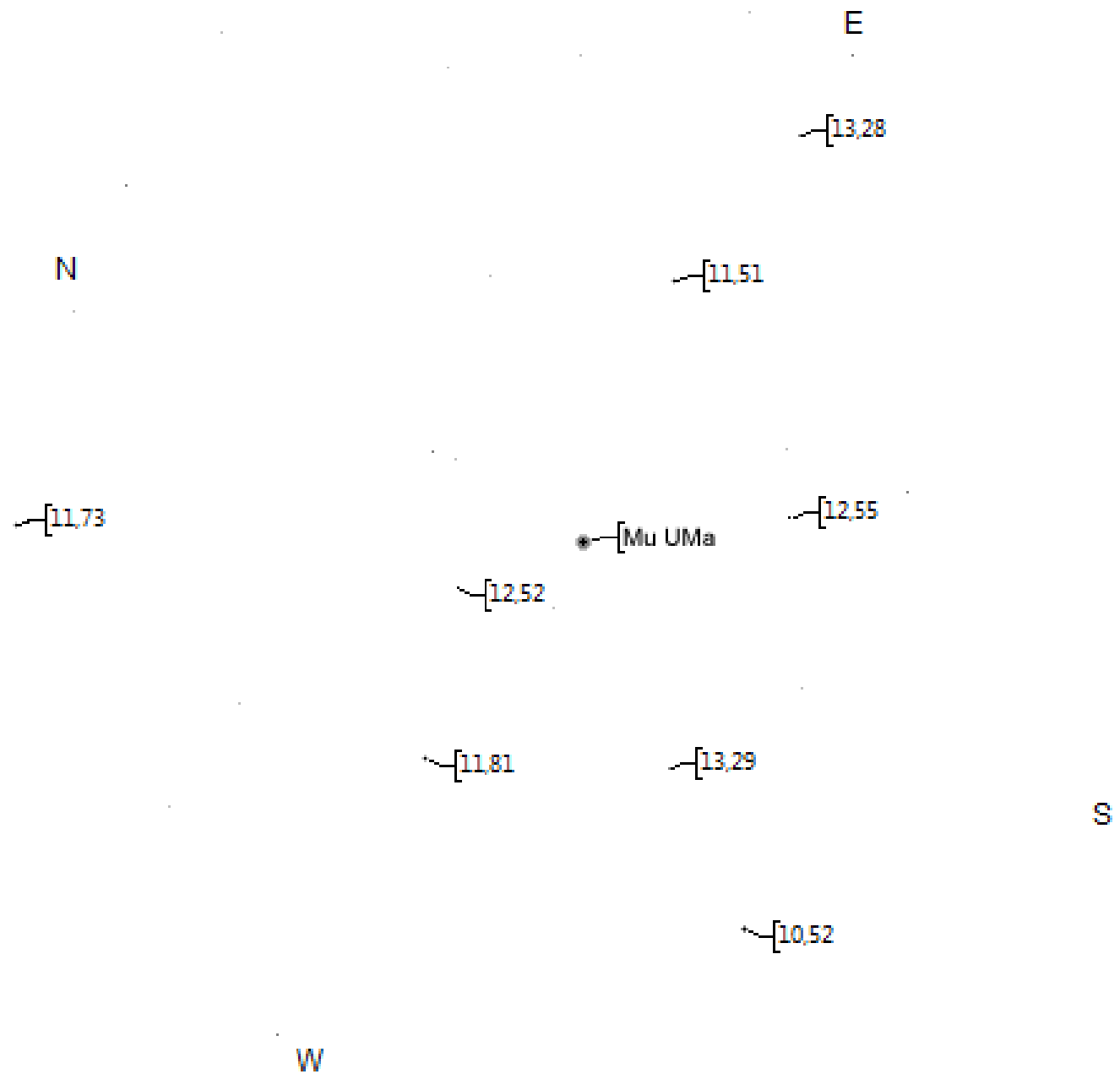
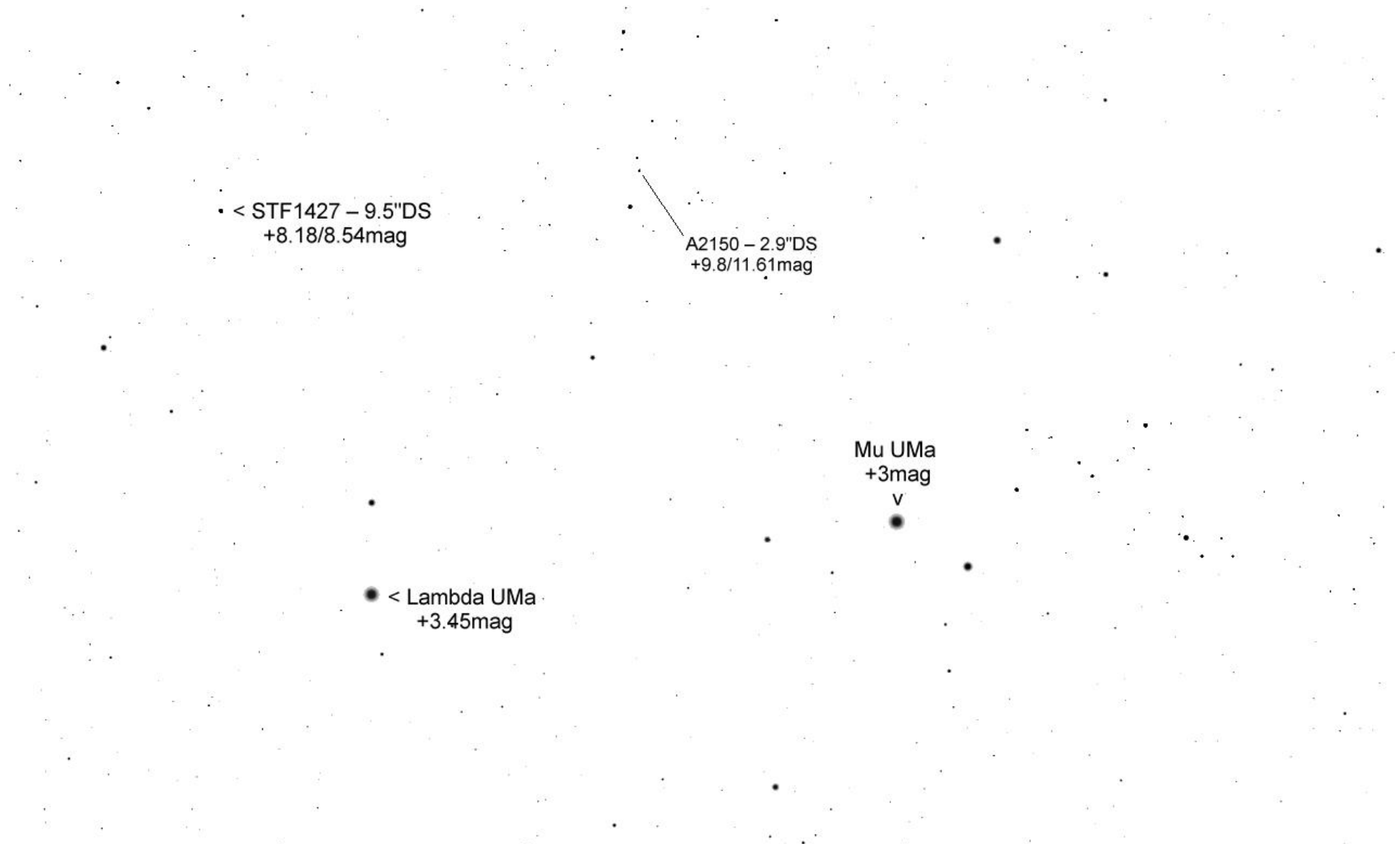


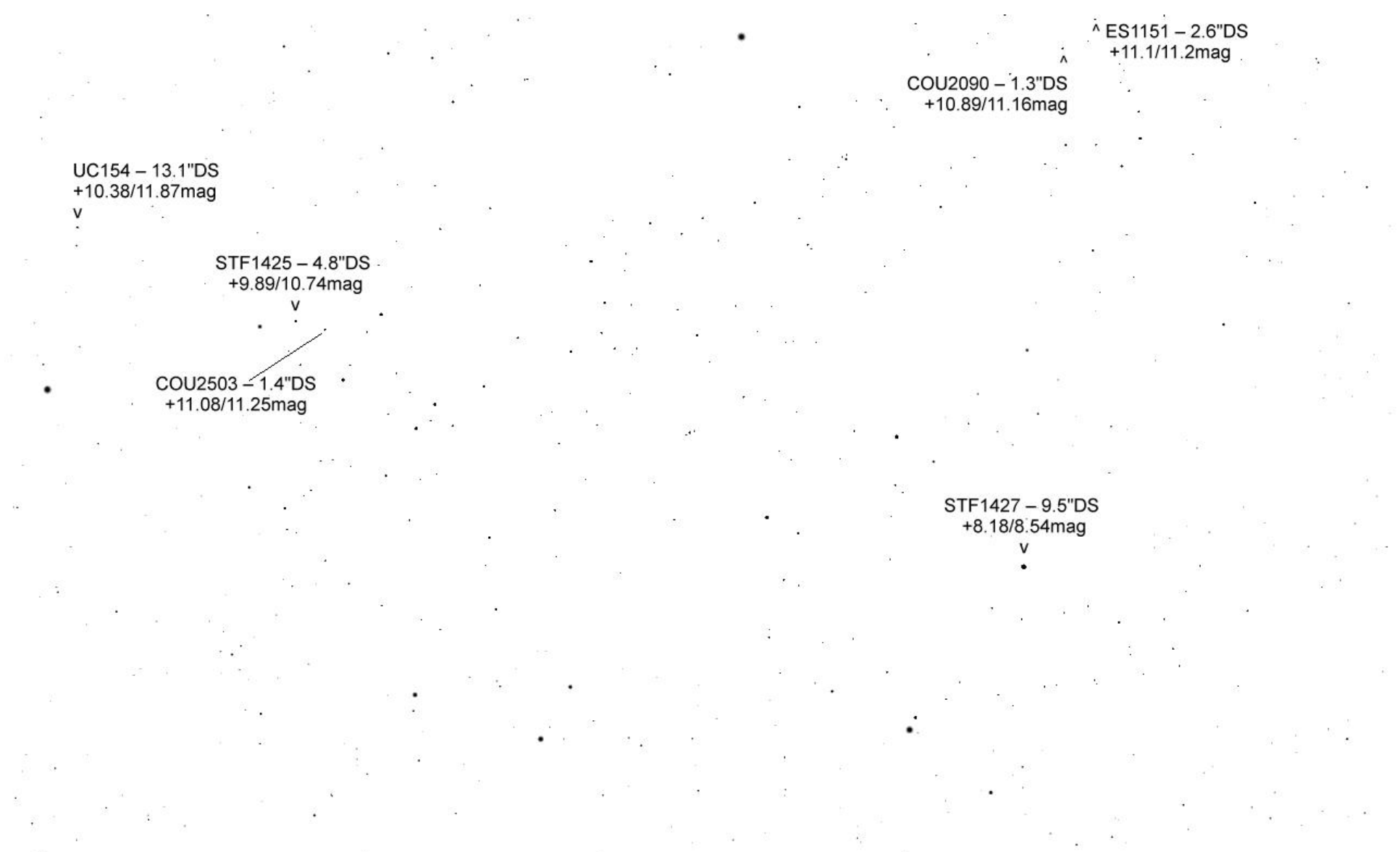
Grosser Baer





TML Mu UMa per Mitte Mai 25'





UC154 – 13.1"DS
+10.38/11.87mag
v

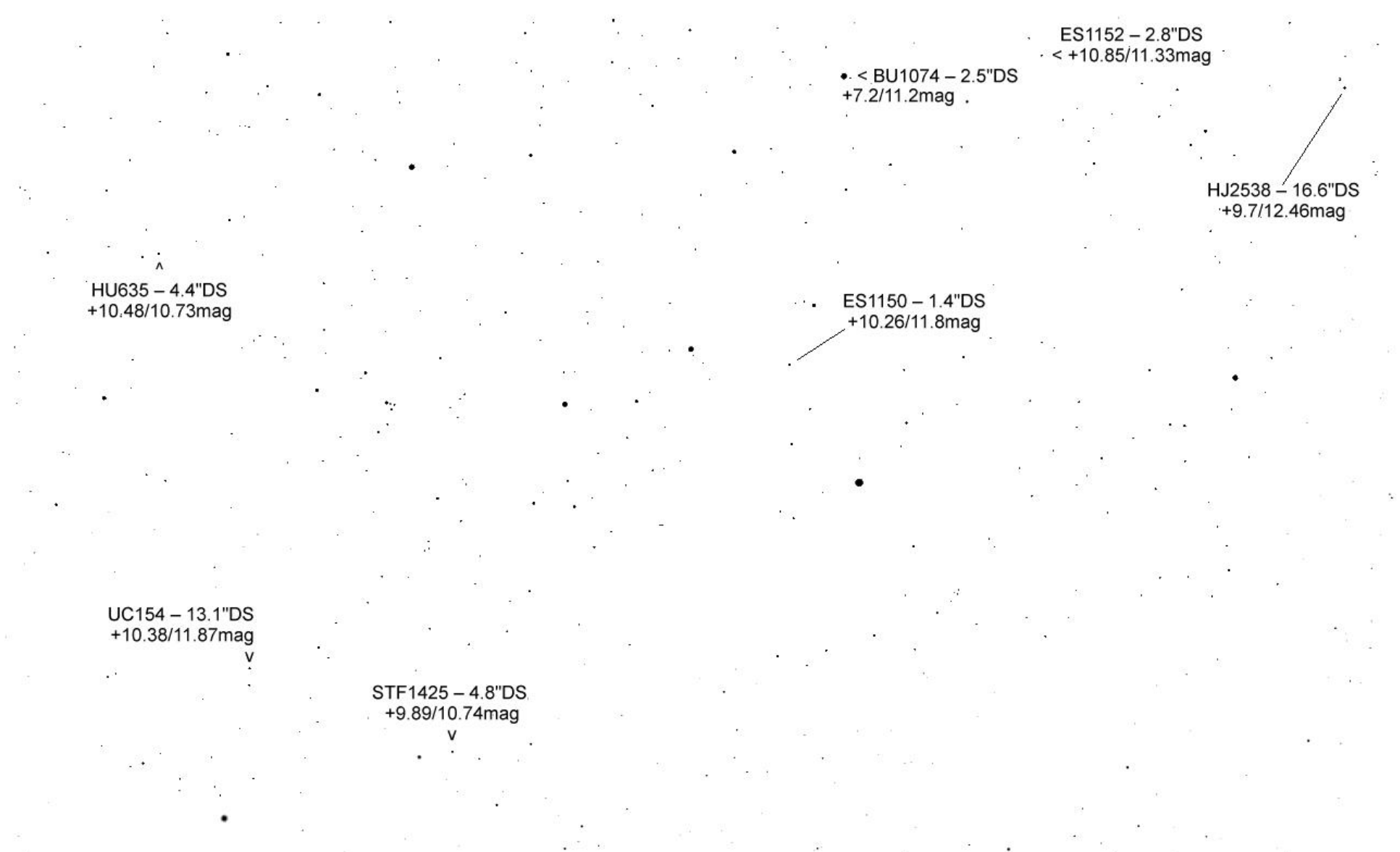
STF1425 – 4.8"DS
+9.89/10.74mag
v

COU2503 – 1.4"DS
+11.08/11.25mag

COU2090 – 1.3"DS
+10.89/11.16mag

^ ES1151 – 2.6"DS
+11.1/11.2mag

STF1427 – 9.5"DS
+8.18/8.54mag
v



HU635 – 4.4"DS
+10.48/10.73mag

• < BU1074 – 2.5"DS
+7.2/11.2mag

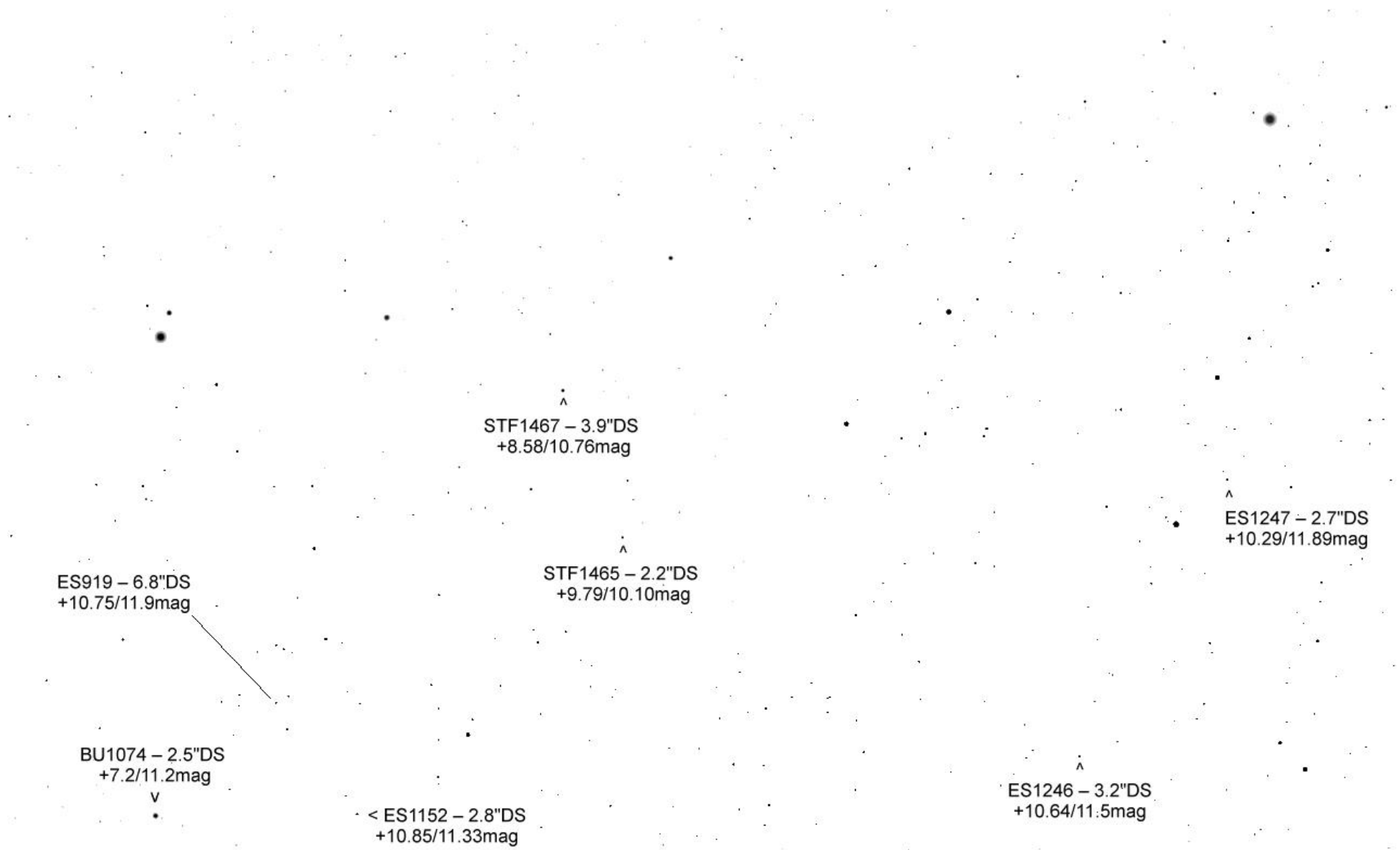
ES1152 – 2.8"DS
< +10.85/11.33mag

HJ2538 – 16.6"DS
+9.7/12.46mag

ES1150 – 1.4"DS
+10.26/11.8mag

UC154 – 13.1"DS
+10.38/11.87mag

STF1425 – 4.8"DS
+9.89/10.74mag



STF1467 – 3.9"DS
+8.58/10.76mag

ES1247 – 2.7"DS
+10.29/11.89mag

ES919 – 6.8"DS
+10.75/11.9mag

STF1465 – 2.2"DS
+9.79/10.10mag

BU1074 – 2.5"DS
+7.2/11.2mag

< ES1152 – 2.8"DS
+10.85/11.33mag

ES1246 – 3.2"DS
+10.64/11.5mag