

· <= A1614 - 1.4"DS
+9/9.1mag

CLB57 - 27.1"DS
+11.2/12.4mag

ES736 - 9.8"DS
+9.67/13.12mag

COU2689 - 0.7"
+9.41/11.89mag

Eta UMa +1.9mag => ●

^
STI2306 – 14.3"DS +11.6/12.2mag

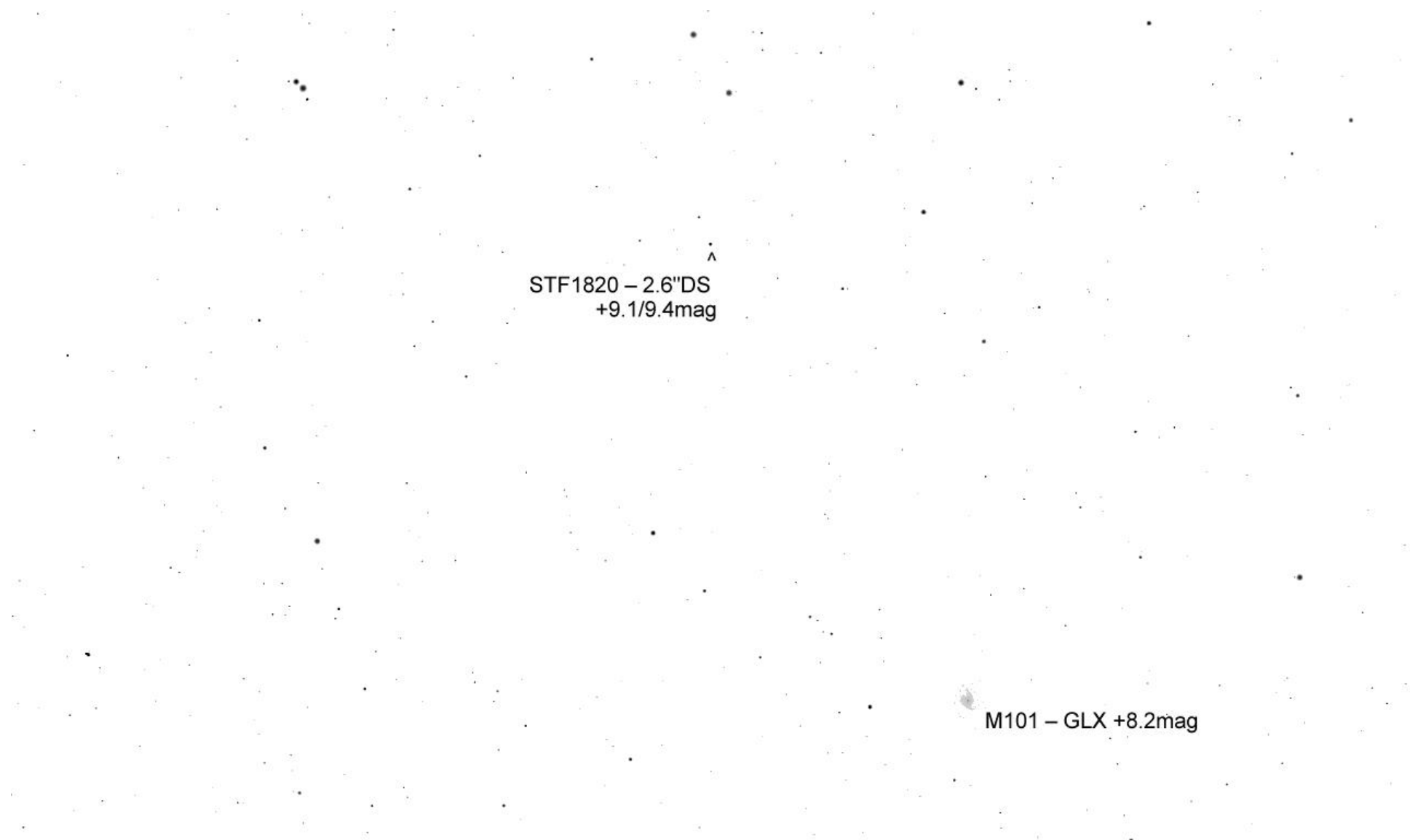
M101 – GLX +8.2mag

TDS9063 – 0.6"DS
+11.36/11.41mag

v
• <= STF1795 – 7.9"DS
+6.9/9.8mag

^
HJ2694 – 42.4"DS
+8.2/11.2mag

• <= A1614 – 1.4"DS
+9/9.1mag



^
STF1820 – 2.6"DS
+9.1/9.4mag

M101 – GLX +8.2mag

STF1831 – 5.7"DS
+7.2/9.6mag

v

^

STF1830 – 10"DS
+9.3/10.3mag

< TDS9144 – 0.6"DS +11.46/11.61mag

^

STF1820 – 2.6"DS
+9.1/9.4mag