

W

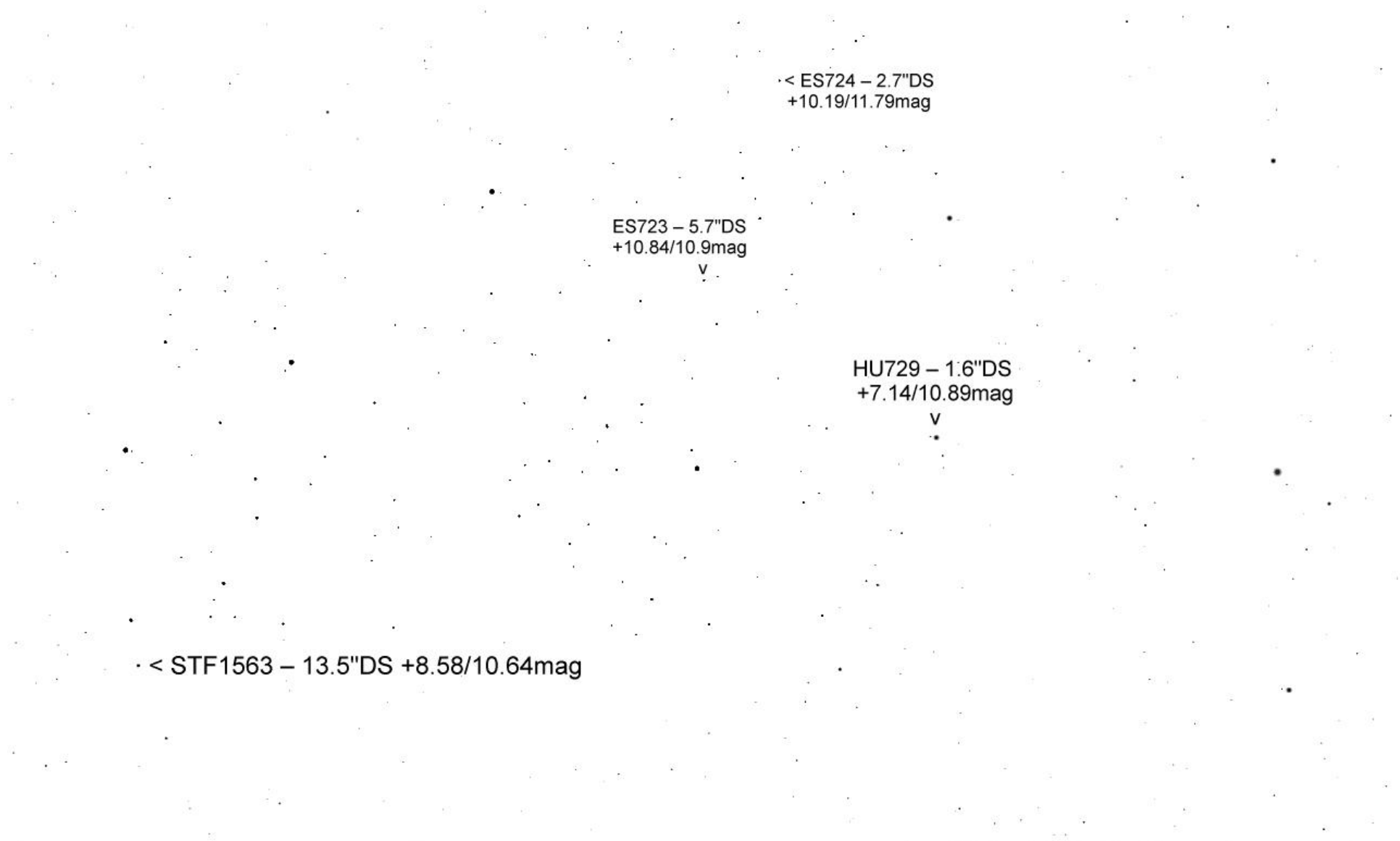
TML Gamma UMa per Ende Mai 25'

A star field image showing numerous stars of varying brightness. Three specific stars are highlighted with text labels. The first label, 'Gamma UMa +2.4mag', is positioned next to a bright star in the upper left. The second label, 'STF1572 - 10.3"DS +9.46/10.79mag', is positioned next to a star in the center. The third label, '< STF1563 - 13.5"DS +8.58/10.64mag', is positioned next to a star in the lower right. The background is a dense field of smaller, fainter stars.

Gamma UMa +2.4mag

Λ
STF1572 – 10.3"DS
+9.46/10.79mag

· < STF1563 – 13.5"DS +8.58/10.64mag



COU1907 – 3"DS
+10.9/11.5mag

TDS8202 – 1.4"DS
+11.3/11.86mag

< ES724 – 2.7"DS
+10.19/11.79mag

HU732 – 1.4"DS
+10.23/11.51mag

HU733 – 2"DS
+9.9/11.05mag

ES923 – 2.4"DS +10.7/12mag

< ES725 – 6.5"DS
+10.36/10.86mag

HU733 – 2"DS
+9.9/11.05mag

KZA20 – 32.2"DS
+9.5/10mag

A1778 – 3.1"DS
+9.6/11.8mag

STF1579 – 3.9"DS >
+6.68/8.32mag

STF1581 – 2.4"DS
+9.8/10.44mag