

^
STF1711 – 0.4"DS
+9.27/9.36mag

● < Eps Vir – 250.2"DS
+2.83/11.9mag

STF1689 – 29.9"DS
+7.1/9.1mag

Eps Vir +2.8mag

^
STF1710 – 2.6"DS
+9.5/10.47mag

^
STF1712 – 9"DS
+10.24/10.57mag

^
A1785 – 2.3"DS
+9.73/10.82mag

^
STF1716 – 2.8"
+8.3/10.5

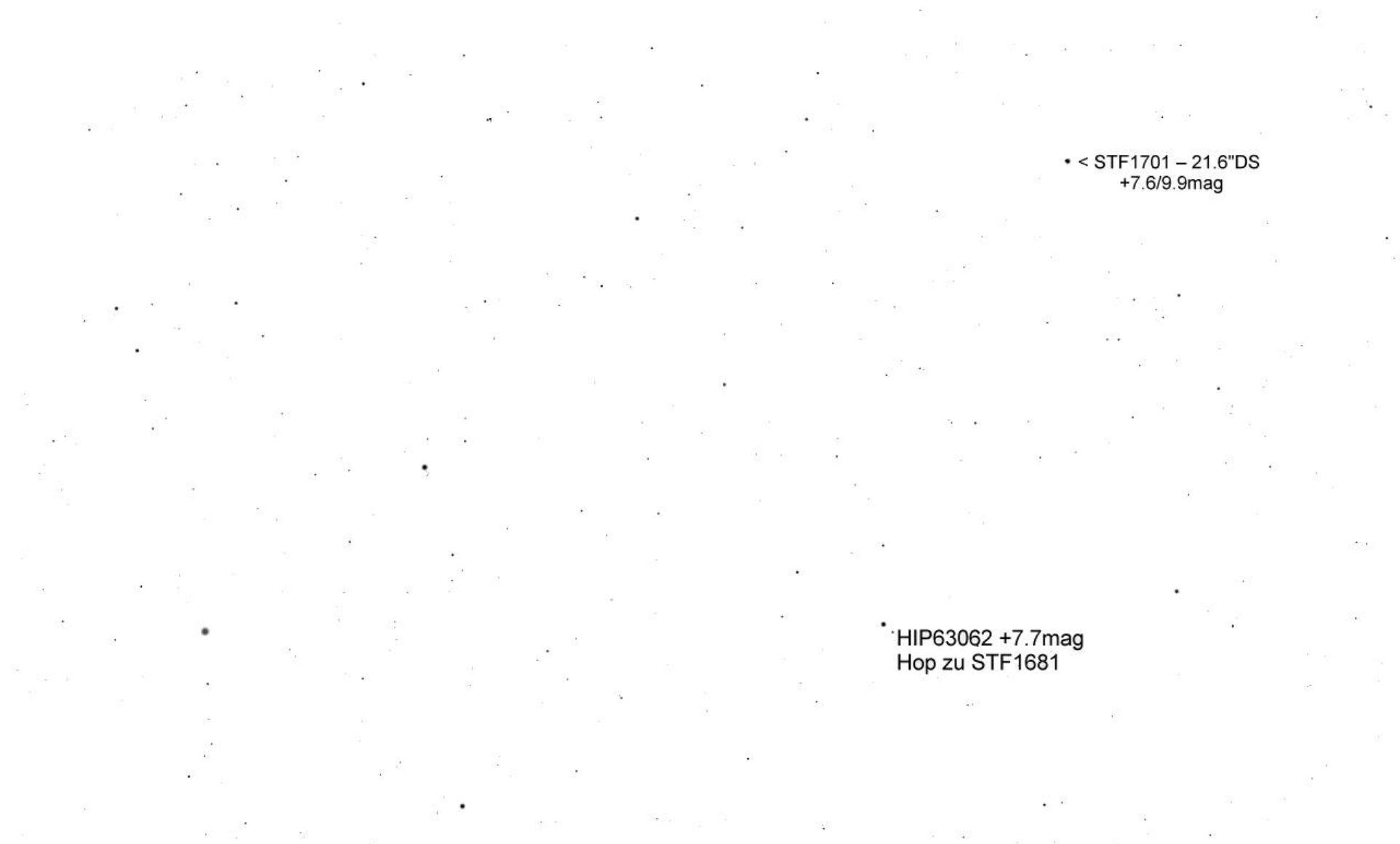
^
STF1716 – 2.8"
+8.3/10.5

^
STF1703 – 8.7"DS
+8.06/11.38mag

v
STF1708 – 10.5"DS
+9.23/10.36mag

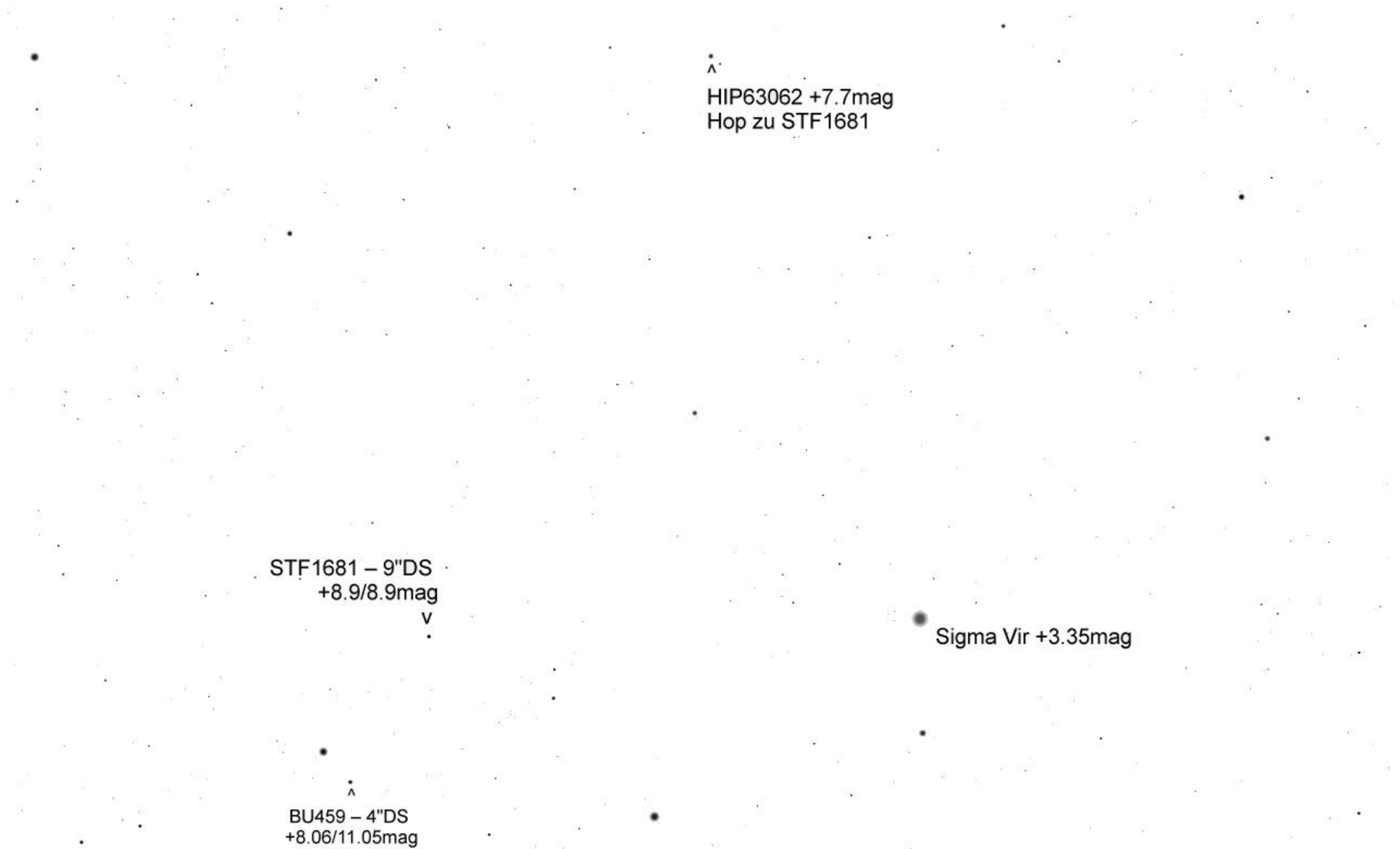
<
STF1693 – 8.6"DS
+9.88/10.51mag

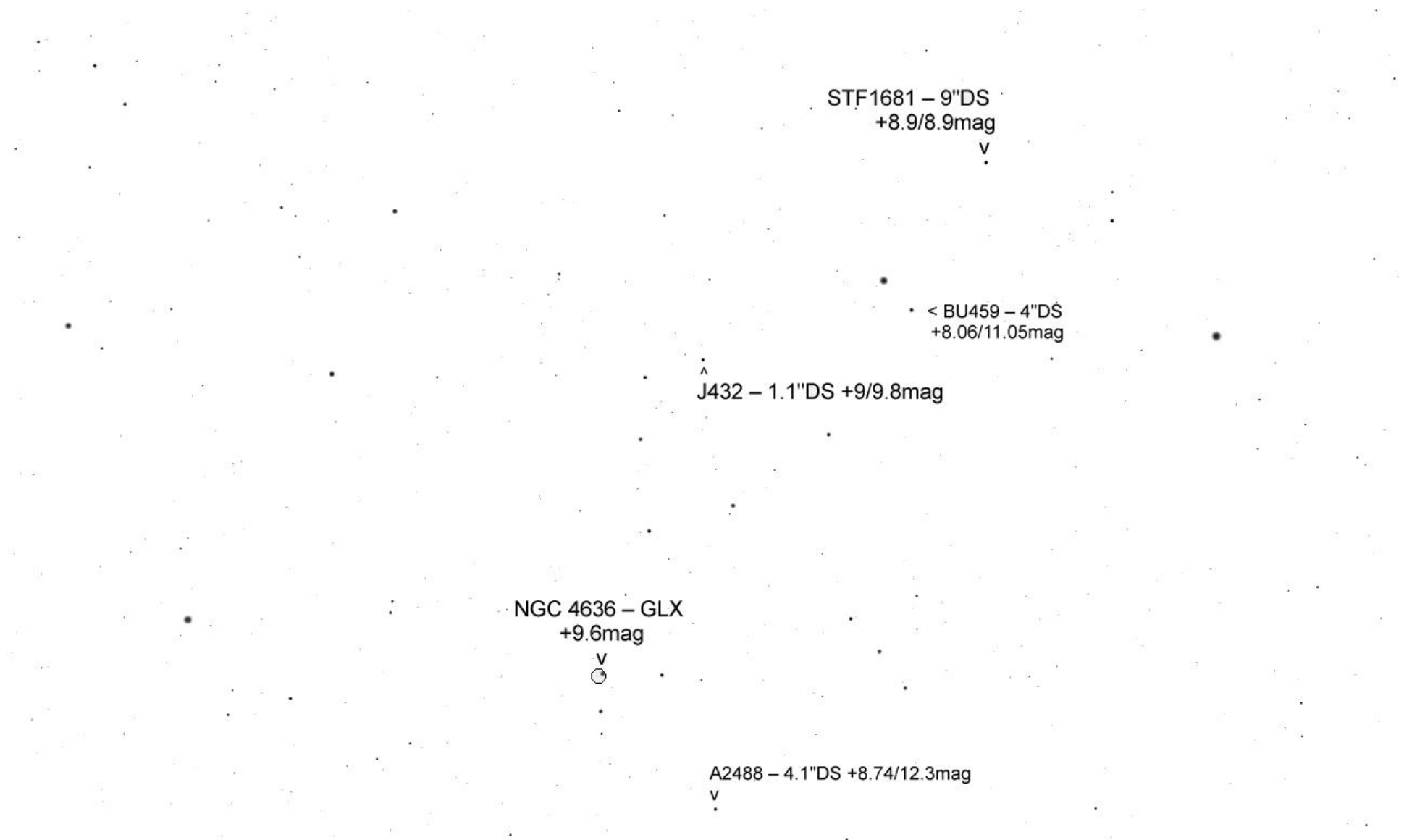
• STF1701 – 21.6"DS +7.6/9.9mag



• < STF1701 – 21.6"DS
+7.6/9.9mag

HIP63062 +7.7mag
Hop zu STF1681





STF1681 – 9"DS
+8.9/8.9mag
V

< BU459 – 4"DS
+8.06/11.05mag

^
J432 – 1.1"DS +9/9.8mag

NGC 4636 – GLX
+9.6mag
V

A2488 – 4.1"DS +8.74/12.3mag
V



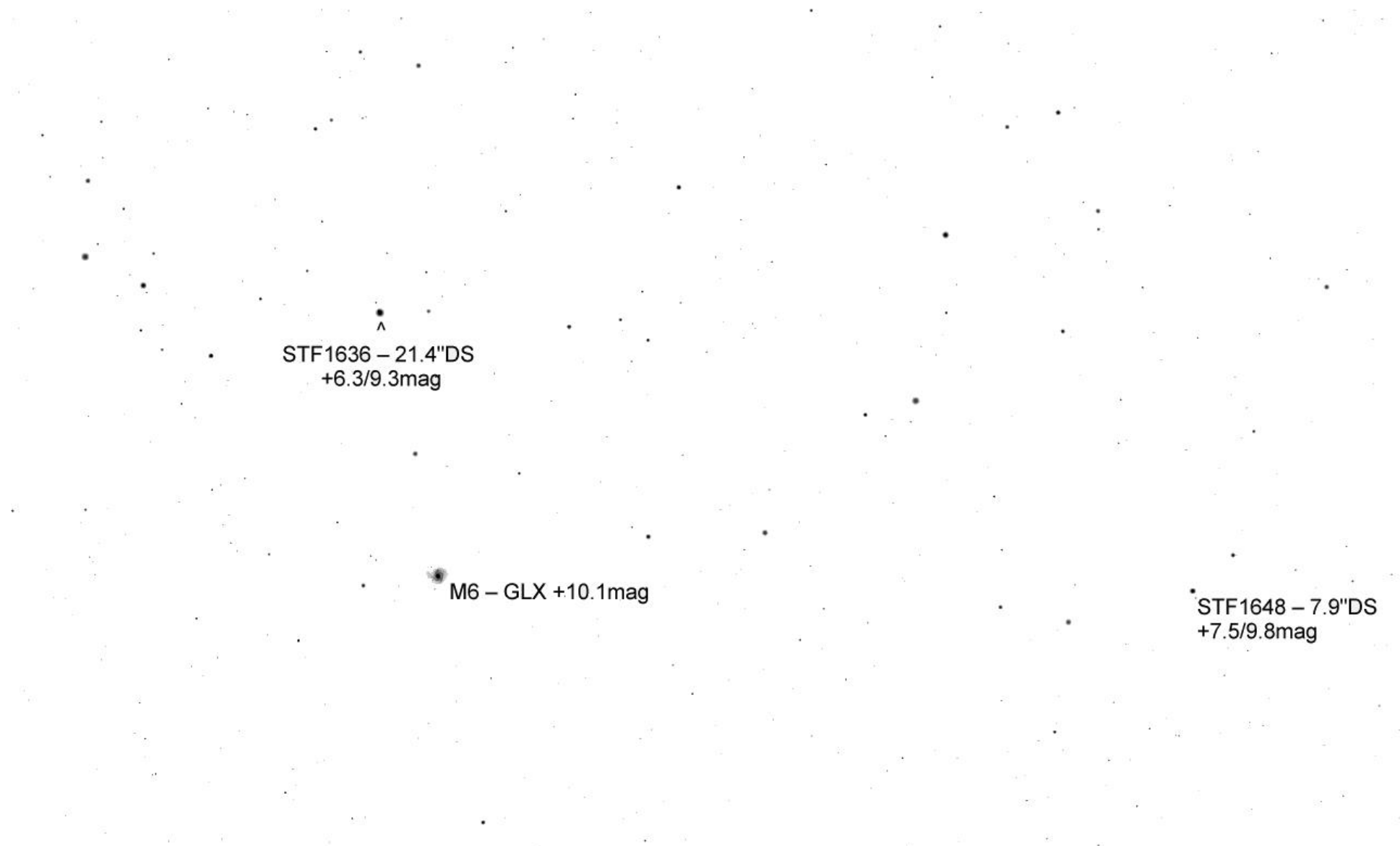
STF1648 – 7.9"DS
+7.5/9.8mag

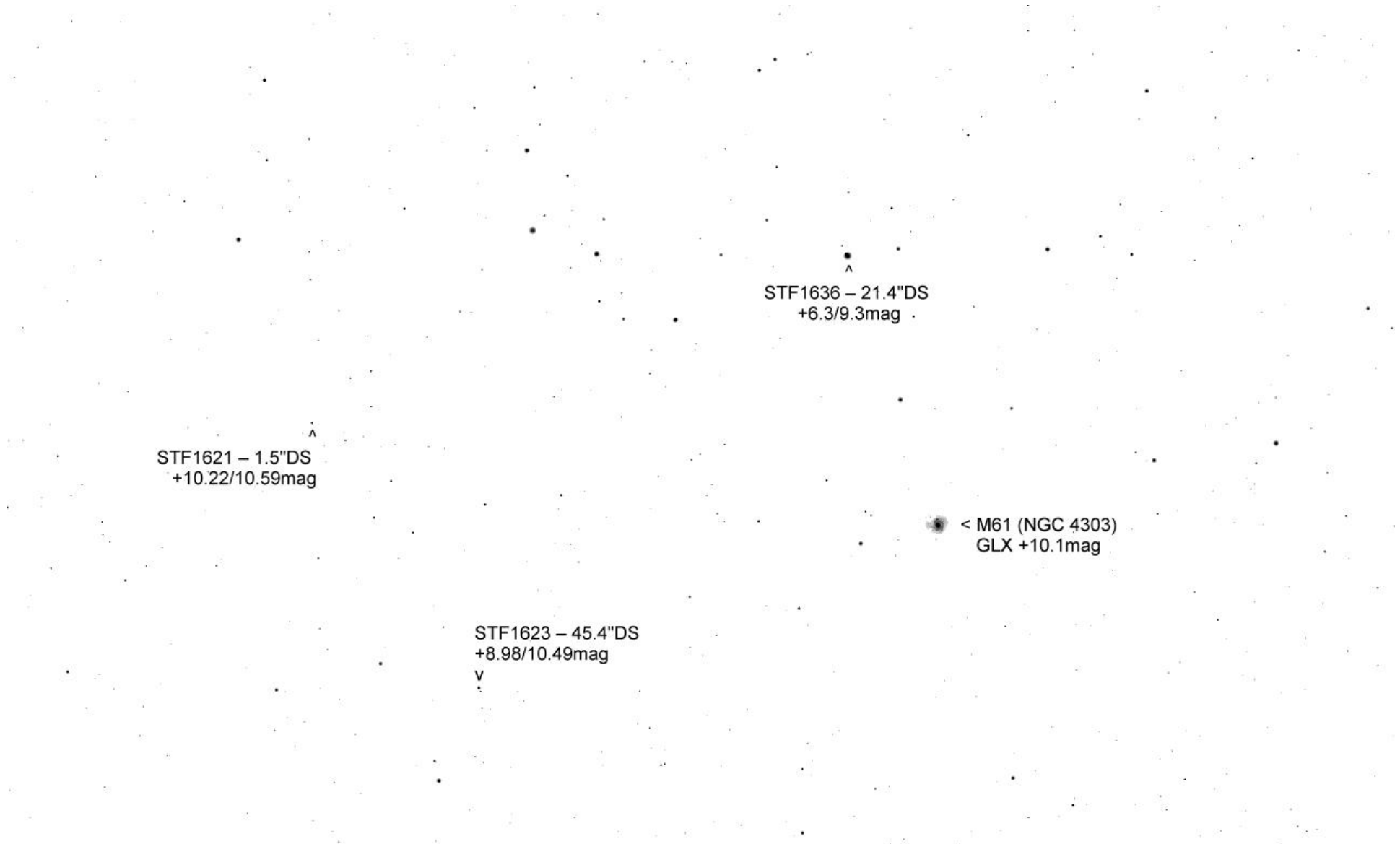
NGC 4636 – GLX
+9.6mag

v



A2488 – 4.1"DS >
+8.74/12.3mag





STF1621 – 1.5"DS
+10.22/10.59mag

STF1636 – 21.4"DS
+6.3/9.3mag

< M61 (NGC 4303)
GLX +10.1mag

STF1623 – 45.4"DS
+8.98/10.49mag