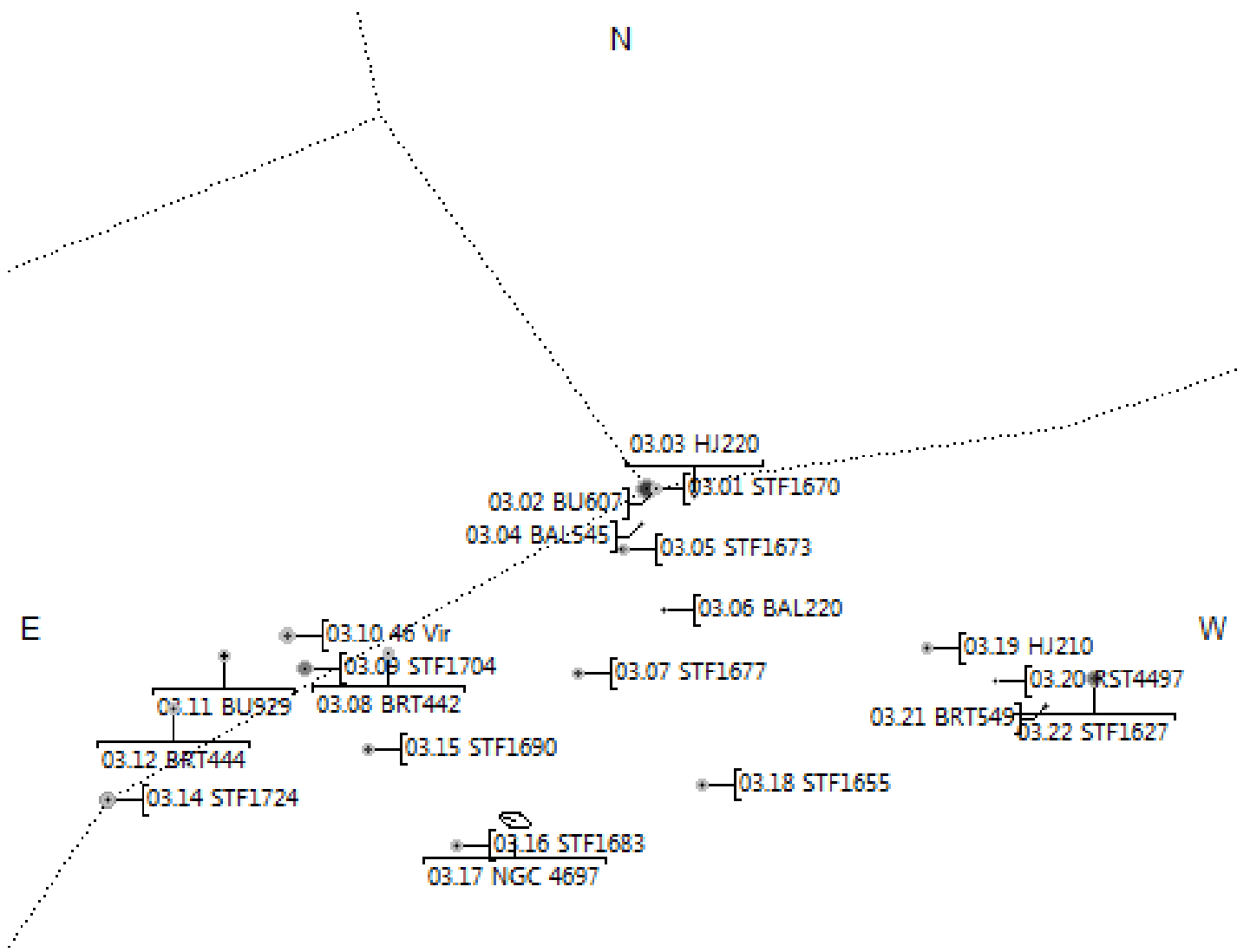
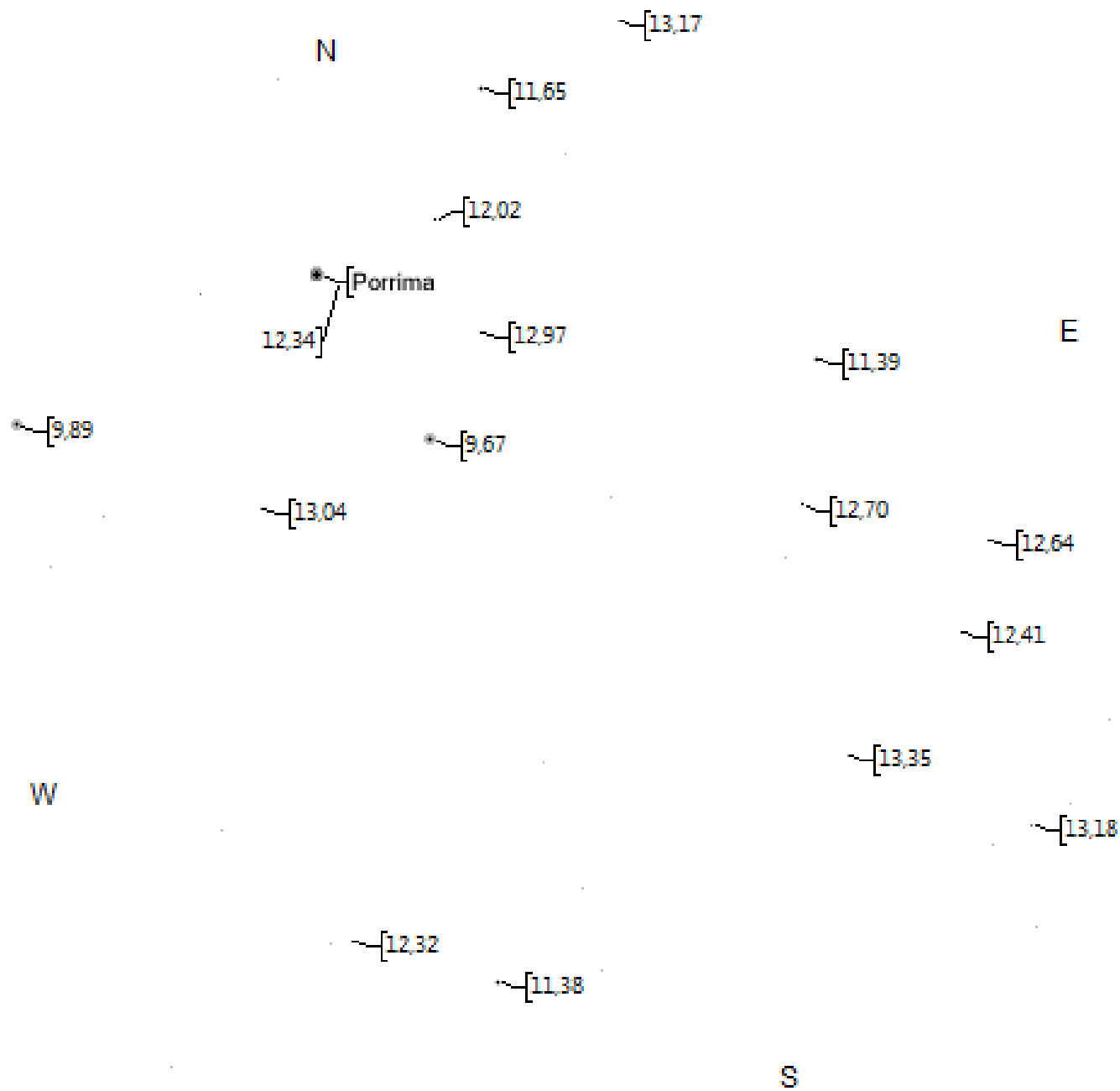


Jungfrau





TML Porrima Ende Mai 25'

Virgo
Diamond
v

BU607 – 0.9"DS
+9.7/11.9mag
v

Porrima – 2.2"DS
+3.48/3.53mag
v

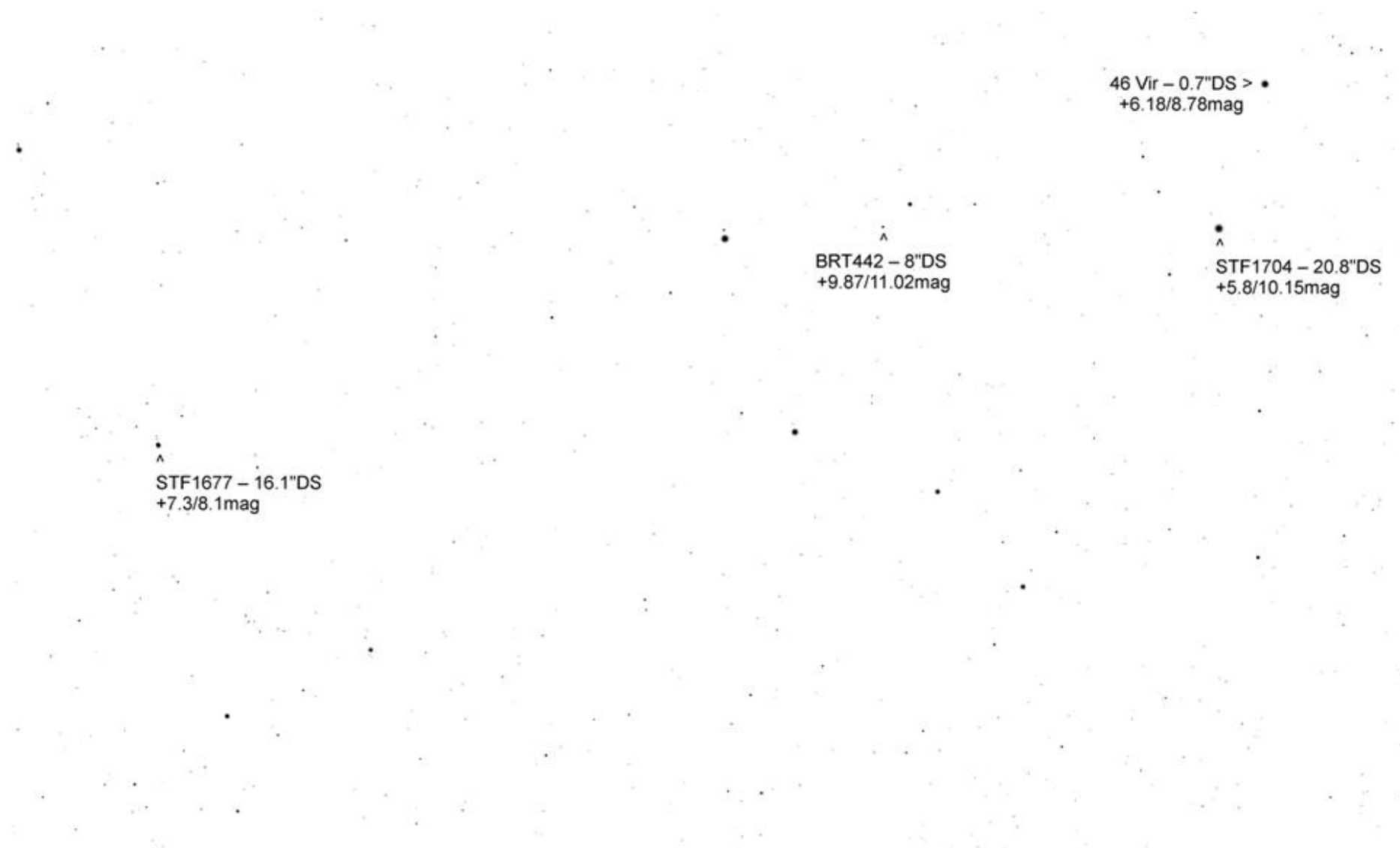
HJ220 – 6.9"DS
+10.72/11.71mag

BAL545 – 4.4"DS
+10.3/11.4mag

< STF1673 – 53"DS +9.16/10.9mag

< BAL220 – 7"DS
+10.7/10.7mag

STF1677 – 16"DS
+7.3/8.12mag
v



46 Vir – 0.7"DS > •
+6.18/8.78mag

▲
BRT442 – 8"DS
+9.87/11.02mag

▲
STF1704 – 20.8"DS
+5.8/10.15mag

▲
STF1677 – 16.1"DS
+7.3/8.1mag

46 Vir – 0.7"DS >
+6.18/8.78mag

• < BU929 – 0.6"DS +7.12/7.65mag

^
STF1704 – 20.8"DS
+5.8/10.15mag

^
BRT444 – 1.7"DS
+9.3/+9.6mag

A10 – 2.8"DS >
+11.4/11.7mag

^
STF1690 – 5.9"DS
+7.2/8.9mag

^
STF1724 – 6.9"DS
+4.4/9.39mag

STF1677 – 16.1"DS
+7.3/8.1mag

STF1690 – 5.9"DS
+7.2/8.9mag

NGC 4697 – GLX
+9.3mag

STF1655 – 8.4"DS
+9.1/9.7mag

STF1683 – 15.3"DS
+8.45/10.69mag

< HJ210 – 24.7"DS
+8.51/10.2mag

STF1655 – 8.4"DS
+9.1/9.7mag
v

