

•  
^  
STF1742 – 1"DS  
+7.8/8.2mag

STF1757 – 1.9"DS  
+7.82/8.75mag  
v

•  
^  
Zeta Vir – 1.8"DS  
+3.4/10mag

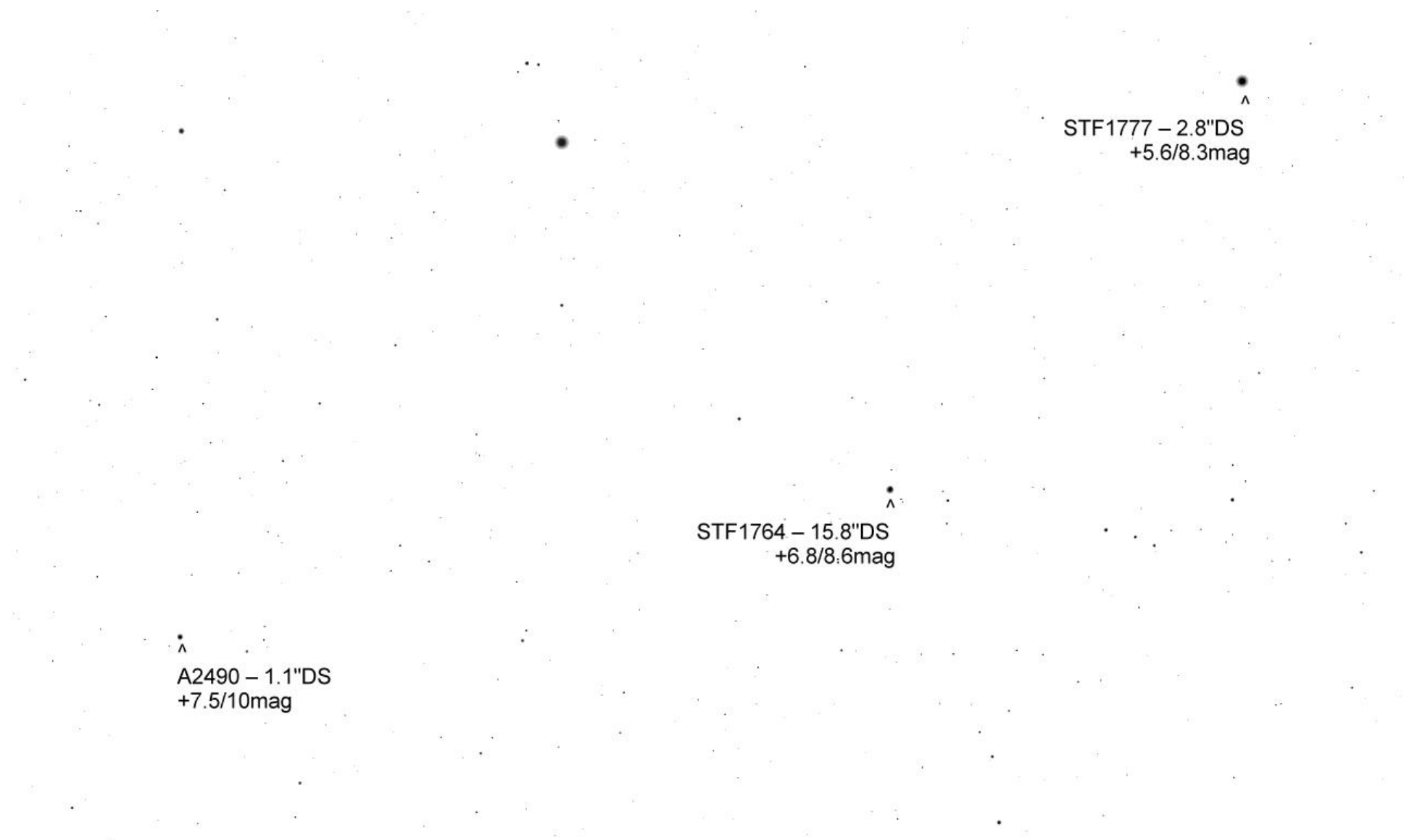
HDS1865 – 1.1"DS +6.6/9.6mag

STF1734 – 1"DS  
+6.8/7.3mag

v

^  
A2490 – 1.1"DS  
+7.5/10mag

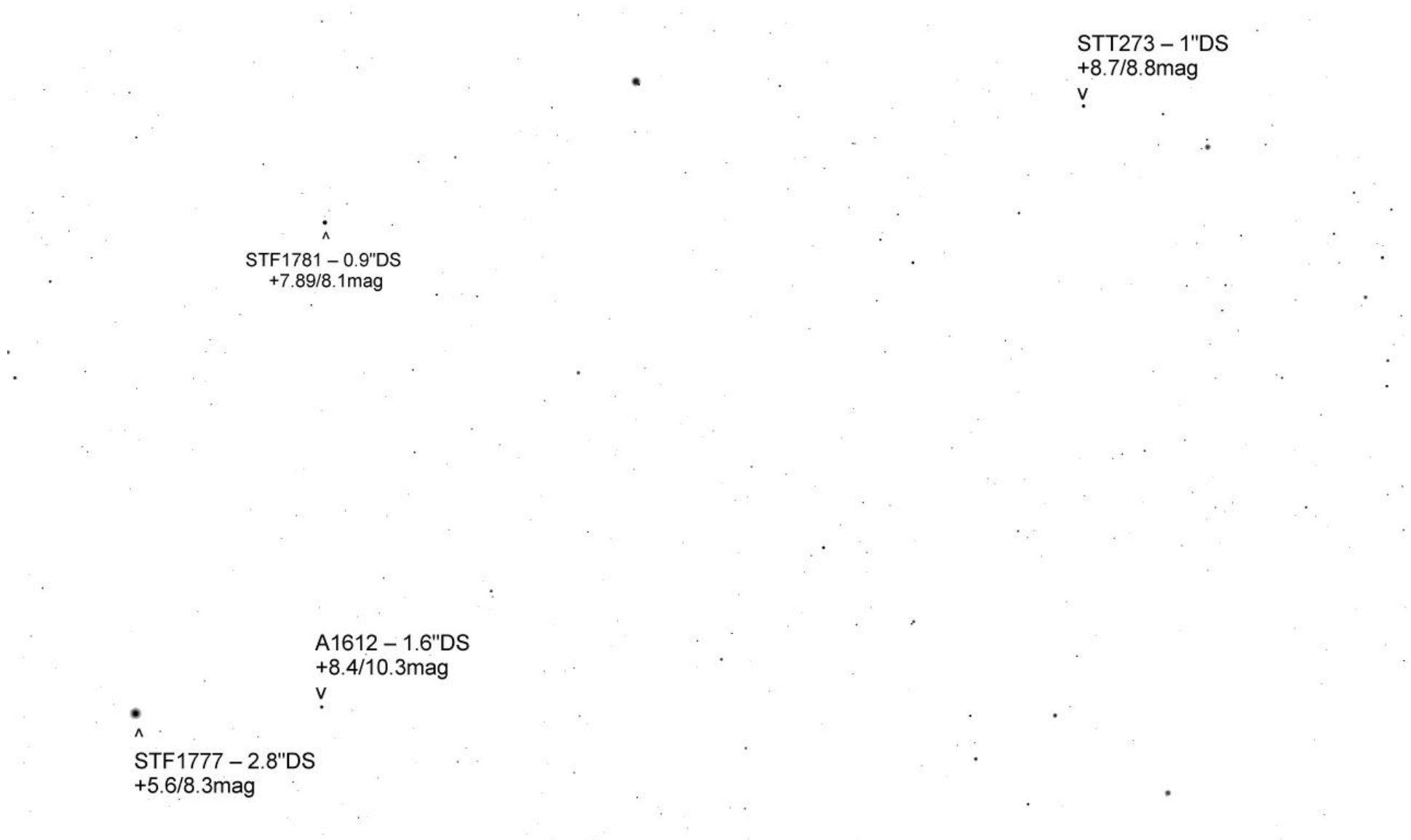
^  
STF1742 – 1"DS  
+7.8/8.2mag



▲  
A2490 – 1.1"DS  
+7.5/10mag

▲  
STF1764 – 15.8"DS  
+6.8/8.6mag

▲  
STF1777 – 2.8"DS  
+5.6/8.3mag

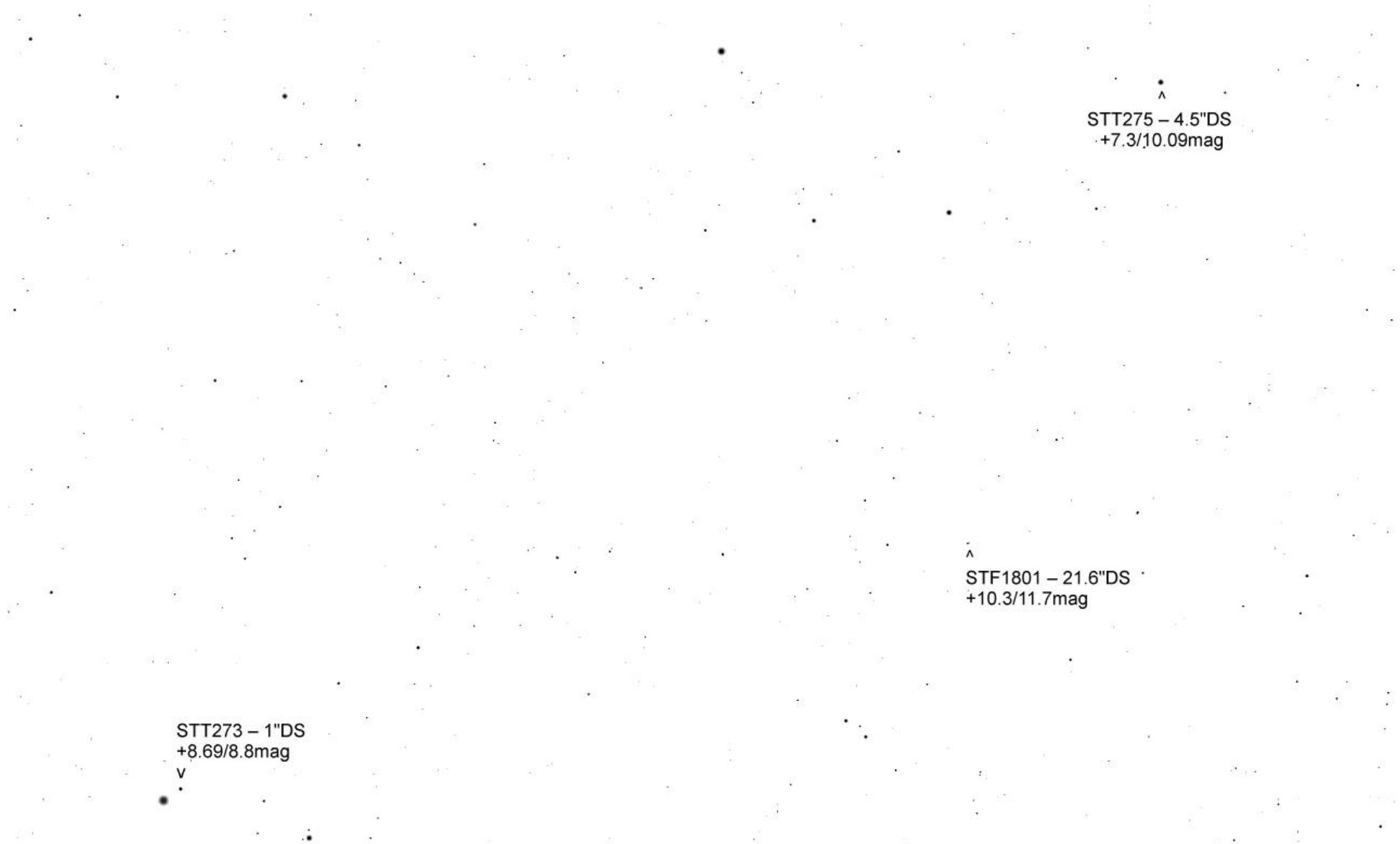


STF1781 – 0.9"DS  
+7.89/8.1mag

STT273 – 1"DS  
+8.7/8.8mag

A1612 – 1.6"DS  
+8.4/10.3mag

STF1777 – 2.8"DS  
+5.6/8.3mag



^  
STT275 – 4.5"DS  
+7.3/10.09mag

^  
STF1801 – 21.6"DS  
+10.3/11.7mag

STT273 – 1"DS  
+8.69/8.8mag  
v

\*STT275 – 4.5"DS  
+7.3/10.1mag

\*STF1824 – 5.4"DS  
+7.9/10.1mag

\*STF1813 – 4.9"DS  
+8.4/8.6mag

^  
STF1813 – 4.9"DS  
+8.45/8.63mag

^  
STF1805 – 4.7"DS  
+8.96/9.19mag

^  
STF1832 – 0.4"DS  
+9.37/9.69mag

^  
STF1842 – 2.6"DS  
+9.22/9.24mag

v  
STF1819 – 0.8"DS  
+7.73/7.92mag

STF1842 - 2.6"DS  
+9.22/9.24mag

v

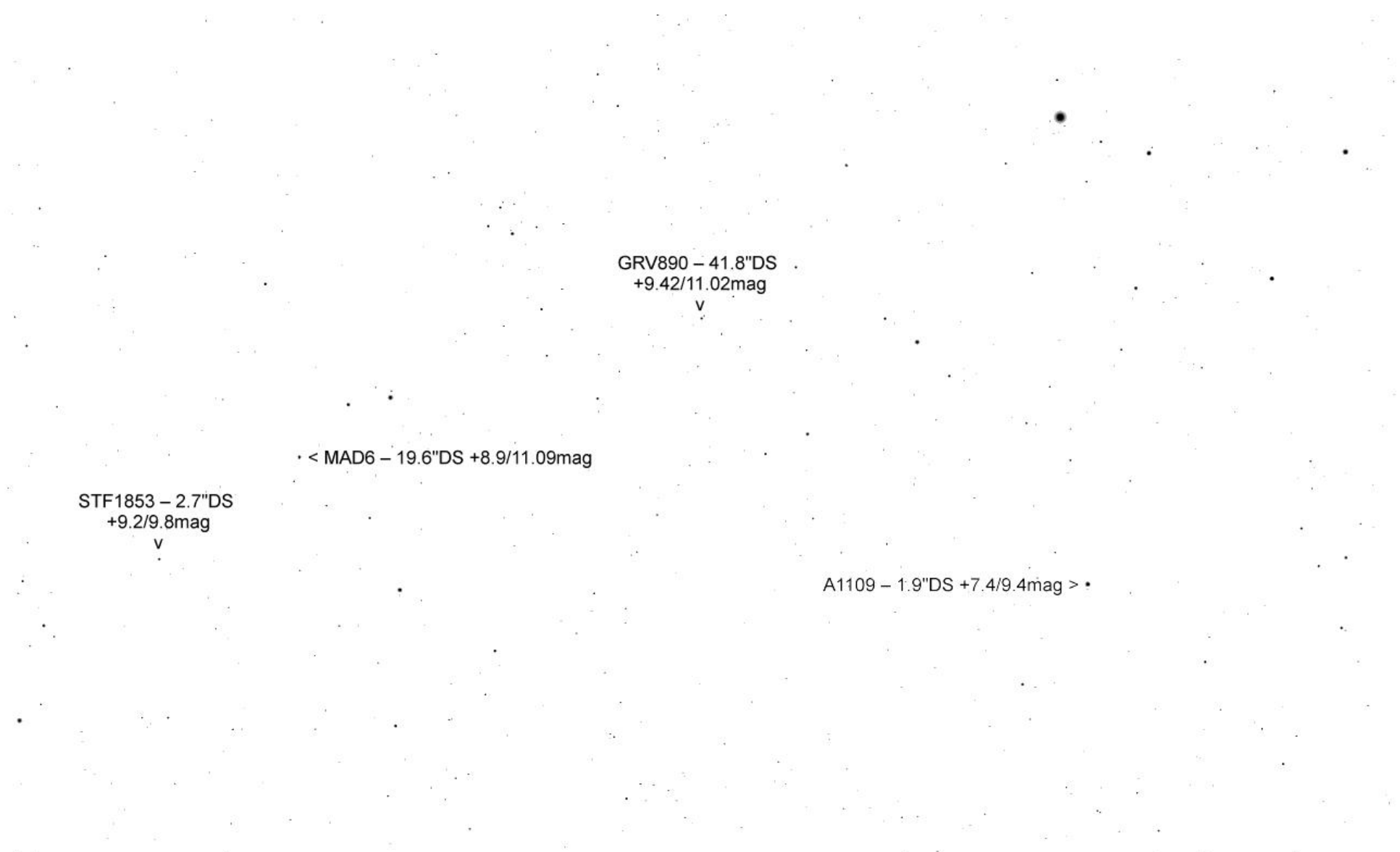
A2227 - 1.6"DS  
+6.6/10.6mag



v STF1853 – 2.7"DS +9.2/9.8mag

^  
BU1443 – 55.3"DS  
+6.17/10.62mag

STF1842 – 2.6"DS  
+9.22/9.24mag  
v



A1109 - 1.9"DS +7.4/9.4mag => \*

STF1883 - 1"DS  
+7.02/8.95mag

v

HEI889 - 1.7"DS  
+10.6/10.7mag

STF1883 – 1"DS  
+7.02/8.95mag

v

HEI889 – 1.7"DS  
+10.6/10.7mag

v

< HJ760 – 18.1"DS  
+9.97/11.09mag

^  
STF1904 – 10.2"DS  
+7.19/7.37mag

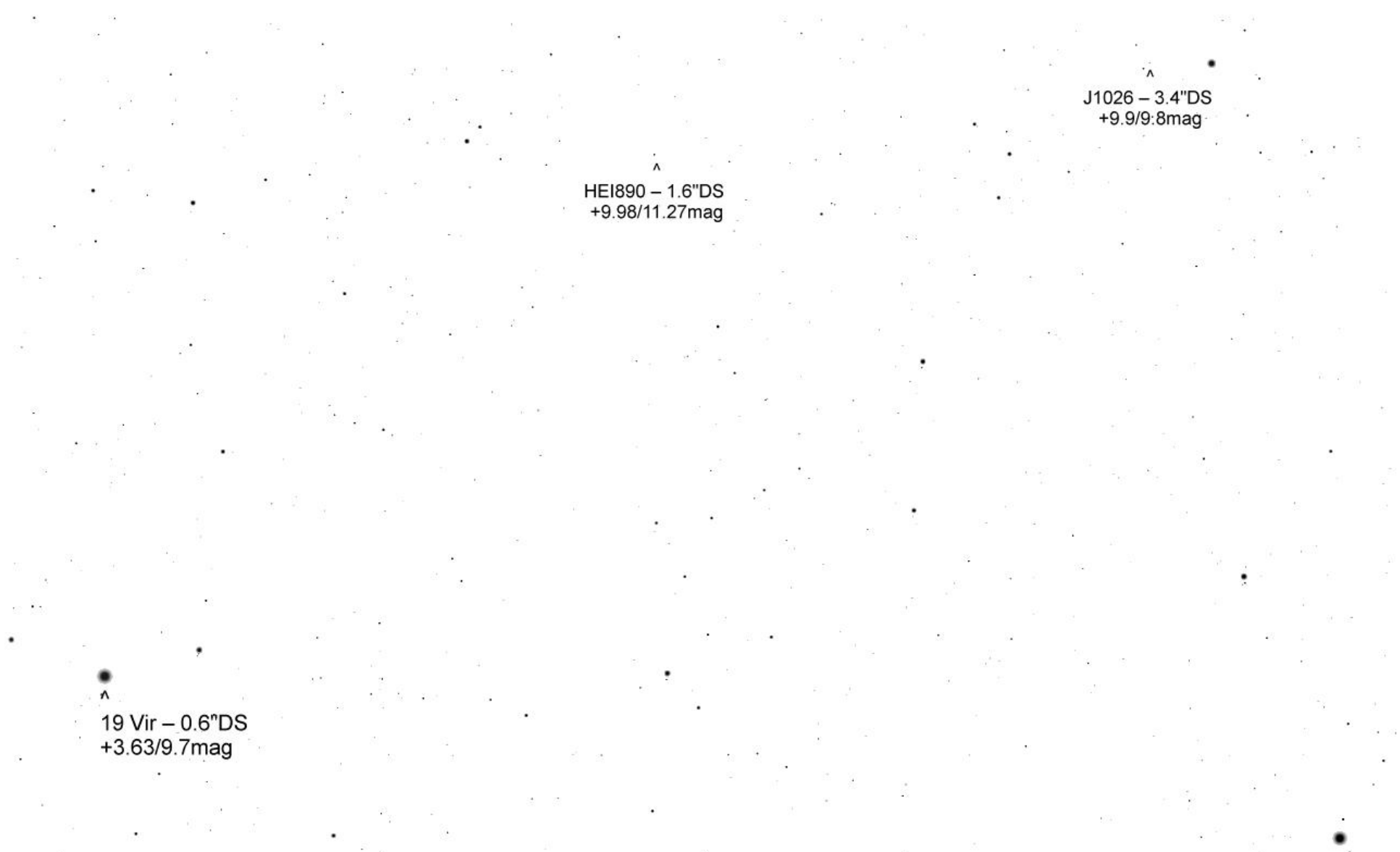
HJ760 – 18.1"DS >  
+9.97/11.09mag

STF1904 – 10.2"DS  
+7.19/7.37mag

J1026 – 3.4"DS  
+9.9/9.8mag

< STF1912 – 6.9"DS  
+9.01/9.73mag

BAL2867 – 5.9"DS  
+9.86/10.12mag



J1026 – 3.4"DS  
+9.9/9.8mag

HEI890 – 1.6"DS  
+9.98/11.27mag

19 Vir – 0.6"DS  
+3.63/9.7mag

A2227 – 1.6"DS  
+6.6/10.6mag

19 Vir – 0.6"DS  
+3.63/9.7mag

STF1881 – 3.5"DS  
+6.7/8.8mag

STF1885 – 4"DS  
+8.8/9.1mag